

HOWARD COUNTY JH GT CHORUS

AUDITION/APPLICATION MATERIALS
2019 – 2020

Jordan Hoffmaster, MWMS
Malcolm Washington, HamHS
Coordinators, Directors

Dear Interested Chorus Student,

We are so excited that you are interested in auditioning for this year's HCPSS Junior High Gifted and Talented Chorus! This packet contains everything you will need to apply to and audition for this GT ensemble. In this packet, you will find:

Audition Materials

- Rhythmic Sight Reading Examples
- Melodic Sight Reading Examples
- A cappella audition piece: "The Water is Wide"
- Accompanied audition piece: "Alleluia"

Application Materials

- Rehearsal and Performance Schedules
- Parent Information Checklist – due Thursday, September 12
- Registration Form – due Thursday, September 12

SUBMIT THE PARENT INFORMATION CHECKLIST AND REGISTRATION FORM TO YOUR SCHOOL CHORUS DIRECTOR BY THURSDAY, SEPTEMBER 12.

Level II Sight Reading – Rhythmic

1.

Exercise 1 consists of two staves of music in 4/4 time. The first staff begins with a treble clef and a 4/4 time signature. The melody starts with a quarter note on G4, followed by a pair of beamed eighth notes on A4 and B4, then a quarter note on C5. This is followed by a quarter rest, a pair of beamed eighth notes on D5 and E5, another pair of beamed eighth notes on F5 and G5, a quarter note on A5, and a quarter note on B5. The staff concludes with a quarter note on C6, a quarter rest, and a final quarter rest. The second staff begins with a bass clef and a whole note on G3. It continues with a quarter note on A3, a quarter note on B3, and a quarter note on C4. This is followed by a quarter rest, a pair of beamed eighth notes on D4 and E4, another pair of beamed eighth notes on F4 and G4, a pair of beamed eighth notes on A4 and B4, a quarter note on C5, a quarter note on B4, and a quarter note on A4. The exercise ends with a double bar line.

2.

Exercise 2 consists of two staves of music in 4/4 time. The first staff begins with a treble clef and a 4/4 time signature. The melody starts with a quarter note on G4, a quarter note on A4, and a quarter note on B4. This is followed by a quarter rest, a quarter note on C5, and a quarter rest. The next measure contains a pair of beamed eighth notes on D5 and E5, followed by a pair of beamed eighth notes on F5 and G5. The following measure has a pair of beamed eighth notes on A5 and B5, then a pair of beamed eighth notes on C6 and B5. The next measure contains a pair of beamed eighth notes on A5 and G5, followed by a pair of beamed eighth notes on F5 and E5. The staff concludes with a pair of beamed eighth notes on D5 and C5, a quarter note on B4, and a quarter rest. The second staff begins with a bass clef and a quarter rest. It continues with a quarter note on G3, a pair of beamed eighth notes on A3 and B3, a pair of beamed eighth notes on C4 and D4, a pair of beamed eighth notes on E4 and F4, a pair of beamed eighth notes on G4 and A4, a pair of beamed eighth notes on B4 and C5, a pair of beamed eighth notes on D5 and E5, a pair of beamed eighth notes on F5 and G5, a pair of beamed eighth notes on A5 and B5, a quarter note on C6, and a quarter rest. The exercise ends with a double bar line.

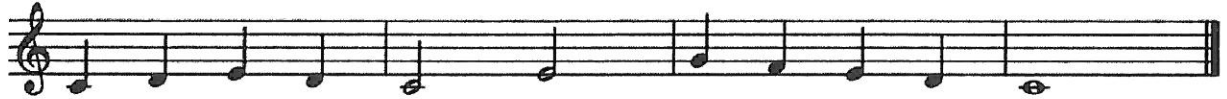
Level II Sight Reading – Melodic

Soprano and Alto

1.



5



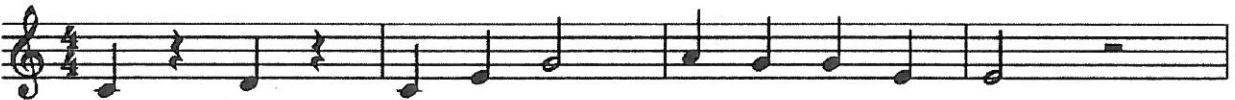
2.



5



3.



5



Level II Sight Reading – Melodic

Tenor

1.

A musical staff in bass clef with a key signature of one sharp (F#) and a time signature of 4/4. The melody consists of eighth notes starting on G3 and ascending stepwise to G4, followed by a quarter rest.

5

A musical staff in bass clef with a key signature of one sharp (F#) and a time signature of 4/4. The melody consists of eighth notes starting on G3 and ascending stepwise to G4, followed by a quarter rest.

2.

A musical staff in bass clef with a key signature of one sharp (F#) and a time signature of 4/4. The melody consists of quarter notes starting on G3 and ascending stepwise to G4, followed by quarter notes descending from G4 to G3.

5

A musical staff in bass clef with a key signature of one sharp (F#) and a time signature of 4/4. The melody consists of quarter notes starting on G3, followed by quarter rests, and then quarter notes ascending to G4, followed by quarter notes descending to G3.

3.

A musical staff in bass clef with a key signature of one sharp (F#) and a time signature of 4/4. The melody consists of quarter notes starting on G3, followed by quarter rests, and then quarter notes ascending to G4, followed by a quarter rest.

5

A musical staff in bass clef with a key signature of one sharp (F#) and a time signature of 4/4. The melody consists of quarter notes starting on G3 and ascending stepwise to G4, followed by quarter notes descending from G4 to G3.

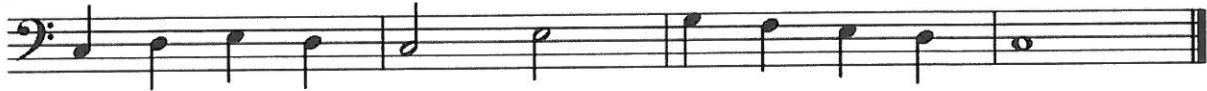
Level II Sight Reading – Melodic

Bass

1.



5



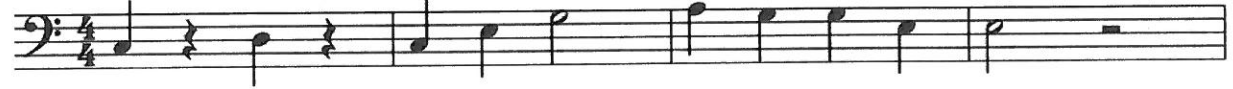
2.



5



3.



5



2019-2020 All State Junior Chorus Audition Selections

The Water Is Wide Soprano

$\text{♩} = 108$
mp



The wa-ter is wide, I can-not get o'er, And nei-ther have

6 *mf*



I wings to fly, Give me a boat that can car-ry

12



two, and both shall row, my love and I

The Water Is Wide Alto

$\text{♩} = 108$
mp



The wa-ter is wide, I can-not get o'er, And nei-ther have

6 *mf*



I wings to fly, Give me a boat that can car-ry

12



two, and both shall row, my love and I

The Water Is Wide

Tenor

$\text{♩} = 108$
mp

The wa-ter is wide, I can-not get o'er, And nei-ther have

6 *mf*

I wings to fly; Give me a boat that can car-ry

12

two, and both shall row, my love and I.

The Water Is Wide

Bass

$\text{♩} = 108$
mp

The wa-ter is wide, I can-not get o'er, And nei-ther have

6 *mf*

I wings to fly; Give me a boat that can car-ry

12

two, and both shall row, my love and I.

ALLELUIA

for S.A.B. voices, accompanied*

from the motet, *Exsultate, Jubilate*, 1773
 WOLFGANG AMADEUS MOZART (1756-1791)
 Arranged by JOHN LEAVITT

Allegro (♩ = ca. 120)

ACCOMP.

5

Ⓟ
SOP.
Al - le - lu - ia, al - le - lu - ia,

ALTO Al - le - lu - ia, al - le - lu - ia,

BAR. *mf*
Al - le - lu - ia,

Ⓟ

Detailed description: The score consists of four systems. The first system is the piano accompaniment (ACCOMP.) in G major, 4/4 time, marked Allegro with a quarter note equal to approximately 120 beats per minute. The second system continues the piano accompaniment. The third system contains the vocal parts: Soprano (SOP.), Alto (ALTO), and Baritone (BAR.). The Soprano and Alto parts have lyrics 'Al - le - lu - ia, al - le - lu - ia,' and the Baritone part has 'Al - le - lu - ia,'. The fourth system continues the piano accompaniment. The key signature has one sharp (F#) and the time signature is 4/4.

Performance time: approx. 1:40

* Also available: S.A.T.B. (A 2233); 2-Part (E 0385); Parts for Violin 1, 2; Viola, Cello/Bass; and opt. Oboe 1,2 (LB0428).

13

al - le - lu - ia, al - le - lu - ia.

al - le - lu - ia - le - lu - ia.

17

Al - le - lu - ia, al - le - lu - ia.

Al - le - lu - ia.

21

al - le - lu - ia, al - le - lu - ia.

al - le - lu - ia.

END

Rehearsal and Performance Schedules

G/T Chorus Coordinators: Jordan Hoffmaster MWMS and Malcolm Washington HamHS

Monday, September 16	GT Audition Prep NOT REQUIRED Students may come to rehearse for the audition	5 – 7 PM	Hammond HS OR Mayfield Woods MS
Monday, September 23 OR Wednesday, September 25	GT Chorus Auditions	4:30 – 7:00 PM	Hammond HS
Wednesday, October 2	Rehearsal	4:30 – 6:30 PM	Hammond HS
Thursday, October 10	Rehearsal	4:30 – 6:30 PM	Hammond HS
Tuesday, October 15	Rehearsal	4:30 – 6:30 PM	Hammond HS
Monday, October 21	Rehearsal	4:30 – 6:30 PM	Hammond HS
Tuesday, October 29	Rehearsal	4:30 – 6:30 PM	Hammond HS
Friday, November 8	Rehearsal	4:30 – 7:00 PM	Mayfield Woods MS
Saturday, November 9	Rehearsal	9 AM – 4 PM	Glenelg HS
Sunday, November 10	Call Time	1:50 PM	Glenelg HS
	Concert	3:00 PM	

For questions regarding the Audition Process or for the GT Chorus Schedule, please contact:
Jordan Hoffmaster at jordan_hoffmaster@hcpss.org or Malcolm Washington at malcolm_washington@hcpss.org

Howard County Junior High School GT Chorus
Jordan Hoffmaster and Malcolm Washington, Coordinators/Conductors

Dear Parents/Guardians of Student Musicians:

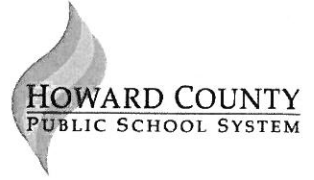
The *Howard County Junior High School Gifted and Talented Chorus* is a countywide musical opportunity for middle school and high school choral students who excel in their school choral programs. Your child has been selected to audition for this enrichment group based on his/her demonstration of excellent music skills and cooperation in his/her home school choral program.

Please read and **initial** the following details:

- _____ I understand that we are registering to audition for the Howard County Junior High School Gifted and Talented Chorus and as such that I am making a primary commitment to attend all rehearsals and the concert for their full duration.
- _____ I understand that parents/guardians will be responsible for transportation to and from all rehearsals and that **students must be at rehearsals on time and picked up on time.**
- _____ **Attendance at all rehearsals and performances is mandatory!** (Please compare the chorus schedule with your calendar to check for conflicts before registering).
- _____ **An unexcused absence may result in the dismissal of the students from the ensemble. Parents/Guardians must contact the coordinators *prior* to the start of the rehearsal regarding a request for an excused absence. It is up to the discretion of the coordinators to determine an excused absence.**
- _____ It is the parents'/guardians' responsibility to transport their child to and from rehearsals and the performance.
- _____ Students selected for the ensemble are expected to participate and to come prepared for each rehearsal.
- _____ Students selected for the ensemble will be assessed a \$100 fee to cover costs of the music and conductors' fees.
- _____ **All GT Chorus candidates must audition.** There will be two audition dates available and one site.
- _____ **Audition Requirements:** Your school choral director has copies of the requirements.
- _____ **Audition Date:** Monday, September 23 or Wednesday, September 25, 2019
- _____ **Audition preference:** _____ Monday, September 23 _____ Wednesday, September 25
- _____ **Audition Site:** Hammond High School – 8800 Guilford Rd, Columbia, MD 21046
- _____ **Audition Times:** 4:30 – 7:00 pm. **Those auditioning will be assigned a 10 minute audition block during this time.**
- _____ **Notification:** School chorus directors will receive students' audition times on or before September 18th.
- _____ **Request:** Parents are requested to wait in the hallway during the audition.
- _____ **Registration:** To register your child for an audition time, please complete the *Registration Form* and **return it to your school choral director by Thursday, September 12th.** The director will make a copy of the form and return it to you. This is a confirmation that the form was received.
Students must bring this copy of the registration form to the audition.

Office of Fine Arts – Music

5451 Beaverkill Road • Columbia, MD 21044 • 410-313-6885 • www.hcpss.org



- REGISTRATION FORM -
School Year 2019-2020 (Please Print All Information)

Student Name _____
Voice _____
Parent / Guardian _____
Home Address _____
Home Phone _____ Emergency Phone _____
School _____ Grade _____
School Chorus Director _____
Private Teacher (if any) _____
Medical Concerns? _____

_____ I understand that I am making a primary commitment to attend all rehearsals and the concert for their full duration. Missing any portion of any rehearsal may result in my dismissal from the ensemble.
_____ I understand that parents will be responsible for transportation to and from all rehearsals and that students will be at rehearsals on time and picked up on time.

Audition Preference: _____ Monday, September 23 _____ Wednesday, September 25

Student Signature _____

Parent Signature _____

PLEASE RETURN THIS FORM TO YOUR SCHOOL CHORUS DIRECTOR BY **THURSDAY, SEPTEMBER 12, 2019**. Your director will make a copy of this form and return it to you – this is confirmation that your form was received. THANK YOU.

PLEASE NOTE – Students selected will be assessed a \$100 fee to cover the costs of music and conductors’ fees.

PLEASE NOTE – YOU MUST BRING YOUR COPY OF THIS FORM TO THE AUDITION AT HAMMOND HIGH SCHOOL. THANK YOU!